

Organized by

Supported by



IMMERSIVE TALKS

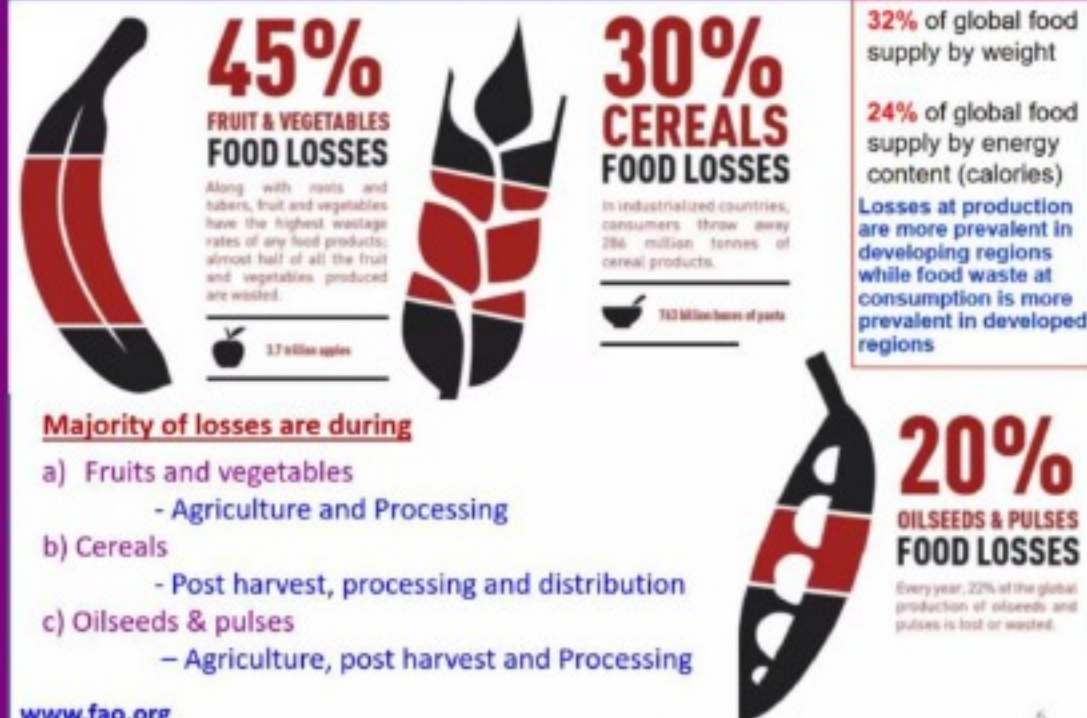
WITH WASTE-TO-VALUE (W2V) DOMAIN EXPERTS

Overview of bioprocess engineering technologies in reducing waste and creating value by Dr. Sandeep Kale (Managing Director, QbD Purples Advanced Technologies)

(Thursday) 24 Sept 2020 | 4 pm - 5 pm

All sessions will be held on an online platform

Example of food wastes - worldwide



Sandeep Kale

Bioprocessing of Bioresources – Building Business Plan

Skills and Product Application Portfolio

Efficiency

Key step

3. Business Model in Market (API, or Formulation)

- B2B, B2C; Contracts – traders, user industry
- Credit period (revenue management, cash flow)
- Market potential
- Building new application

2. Processing Plant (for API or till formulation)

- Process Technology and Plant Engineering (multipurpose)
- Equipment's and integration, piping's
- Utilities (power, steam, water etc.)
- Effluent treatment (ZLD..?)
- QC/QA and others like maintenance etc.
- Working capital, OPEX, CAPEX
- Manpower (Skilled, unskilled)

1. Starting Resources

- Sourcing of raw materials & quantity
- Transportation of raw material.?
- Organized Vs unorganized availability
- Stability (immediate Vs delayed processing)
- Cost and payment terms

Bioprocess Engineering & Technologies in Reducing Waste and Creating Value

Sandeep B. Kale, PhD



QbD Purple Advanced Technologies Pvt. Ltd. (QPAT),
16, Sai Durga, Sahyadri Farms, Baner, Pune-411045, India
sandeep.kale@qpatttech.com, qbdpurple@gmail.com; www.qpatttech.com

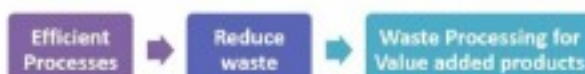
24th September 2020 @Venture Center, Pune



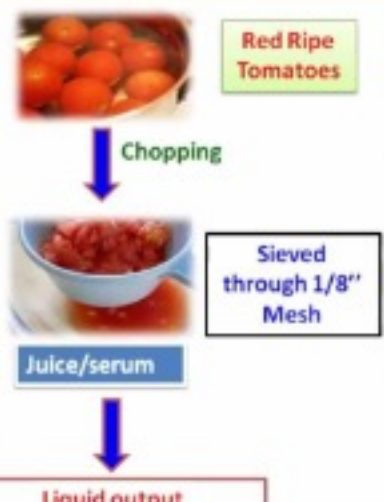
Sandeep Kale

Bioprocess Technology (commercial scale) = Biosciences + Engineering

Design, Development and Scale up of Processes and equipment's for the manufacturing of products such as agriculture, food, feed, biopharmaceuticals, nutraceuticals, biochemicals and biopolymers, paper etc. from biological material



Waste is a Resource



Poojadevi Shar...

Prakash Wadga...

Lakshay Sethi

Mohan Kumar...

Total Number of Participants
34